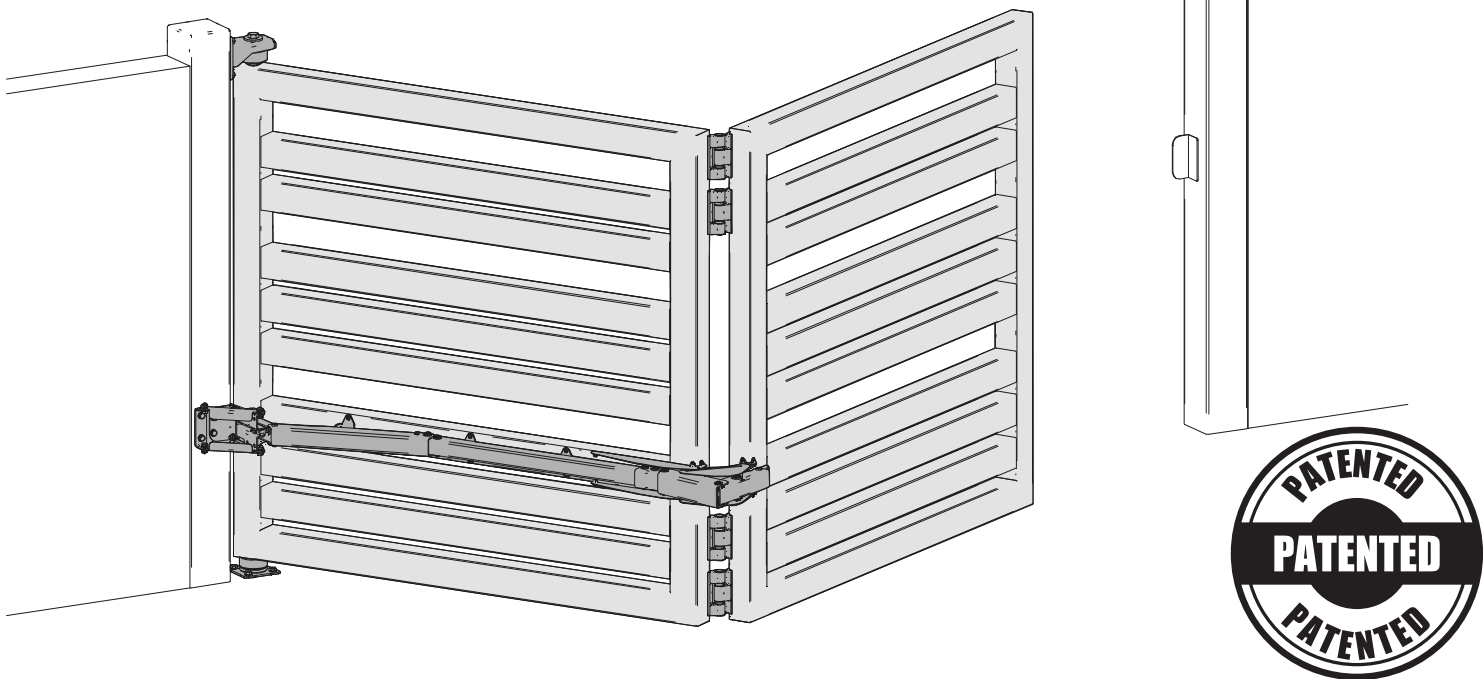


KIT BI-FOLDING HD BI-FOLDING HD KIT

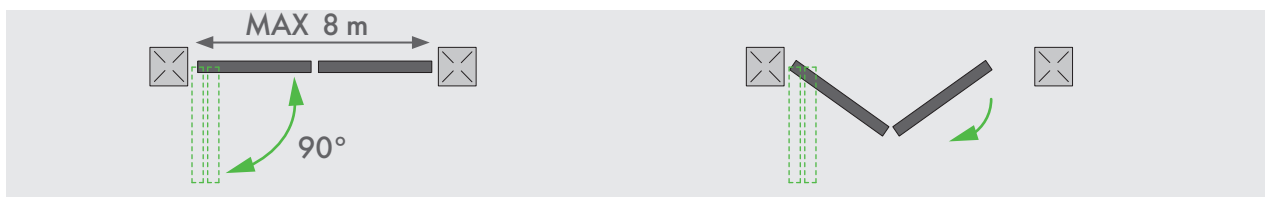
Kit de accesorios en acero galvanizado, con bisagras de aluminio, para la construcción de un portón plegable con puertas batientes versión pesada. El sistema HD ha hecho suyas todas las prestaciones del sistema Bi-folding residencial, dotándose de un brazo reforzado que puede alcanzar aberturas considerables. Las bisagras y pernios han sido diseñadas específicamente y garantizan una construcción excepcionalmente sólida, asociada a un movimiento rápido y preciso, sin el uso de rieles en el suelo.

Además, las puertas abatibles permiten minimizar el espacio ocupado durante la apertura y el cierre. Este sistema es perfecto para aplicaciones industriales y/o comerciales, prestando siempre especial atención a las necesidades de protección y seguridad.

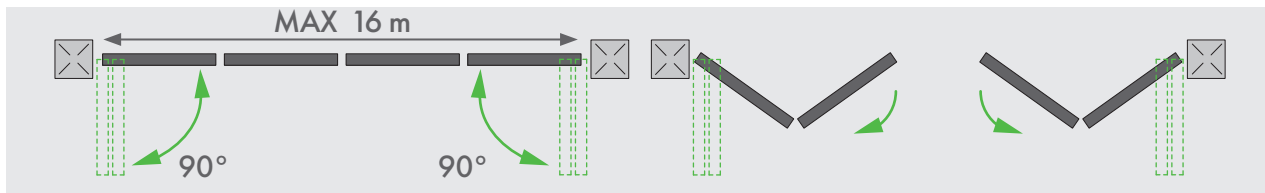
Galvanized accessories Kit with aluminum hinges for Bi-folding Heavy Duty system. The new HD system has all the classical Bi-folding features, with a reinforced arm which permits to sustain heavier leaves. All the hinges, specifically designed, guarantee a quick but very precise movement, without the need of any ground rail, giving as result a system of exceptional solidity. In addition, the folding leaves allow to reduce the footprint to the minimum during the opening and closing phase. Our Bi-folding HD is designed for both industrial and commercial use, with a particular attention to the protection and security needs.



1 kit
Para puerta simple
for single gate



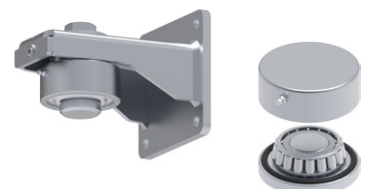
2 kit
Para puerta doble
for double gate



KC7110.180 CON PERNIO REDONDO PARA SOLDAR / WITH ROUND HINGE TO WELD


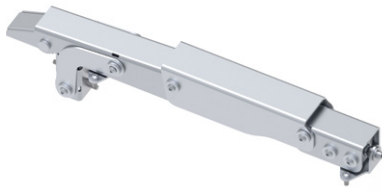


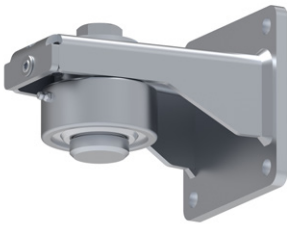


VC4114.090 Pernio redondo superior / Round upper Hinge

VC4202.090 Pernio redondo inferior / Round bottom Hinge



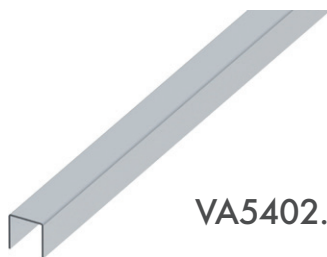


LISTA DE COMPONENTES
COMPONENTS

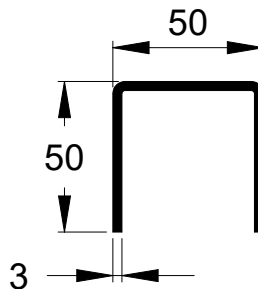
<p>x1</p> 	<p>x1</p> 	<p>x4</p> 	
<p>VC7101.080</p>	<p>VC7102.080</p>	<p>VL4500.140.V</p>	
<p>x2</p> 	<p>x1</p> 	<p>x1</p>  <p>PIASTRA INCLUIDA PLATE INCLUDED</p>	<p>x1</p> 
<p>VC7105</p>	<p>VC4114.090</p>	<p>VC4202.090</p>	<p>plantilla de perforacion/ drilling template</p>



PERFIL GUÍA
GUIDE PROFILE



VA5402.003



Material / materials
S235JR-Fe360.B



ARTÍCULOS RELACIONADOS

Conéctese a nuestra pagina web para conocer los diferentes tipos y tamaños disponibles

RELATED ARTICLES

Click on our website for other related items



VC9101
VC9111



VC5101
VC5102
VC5103



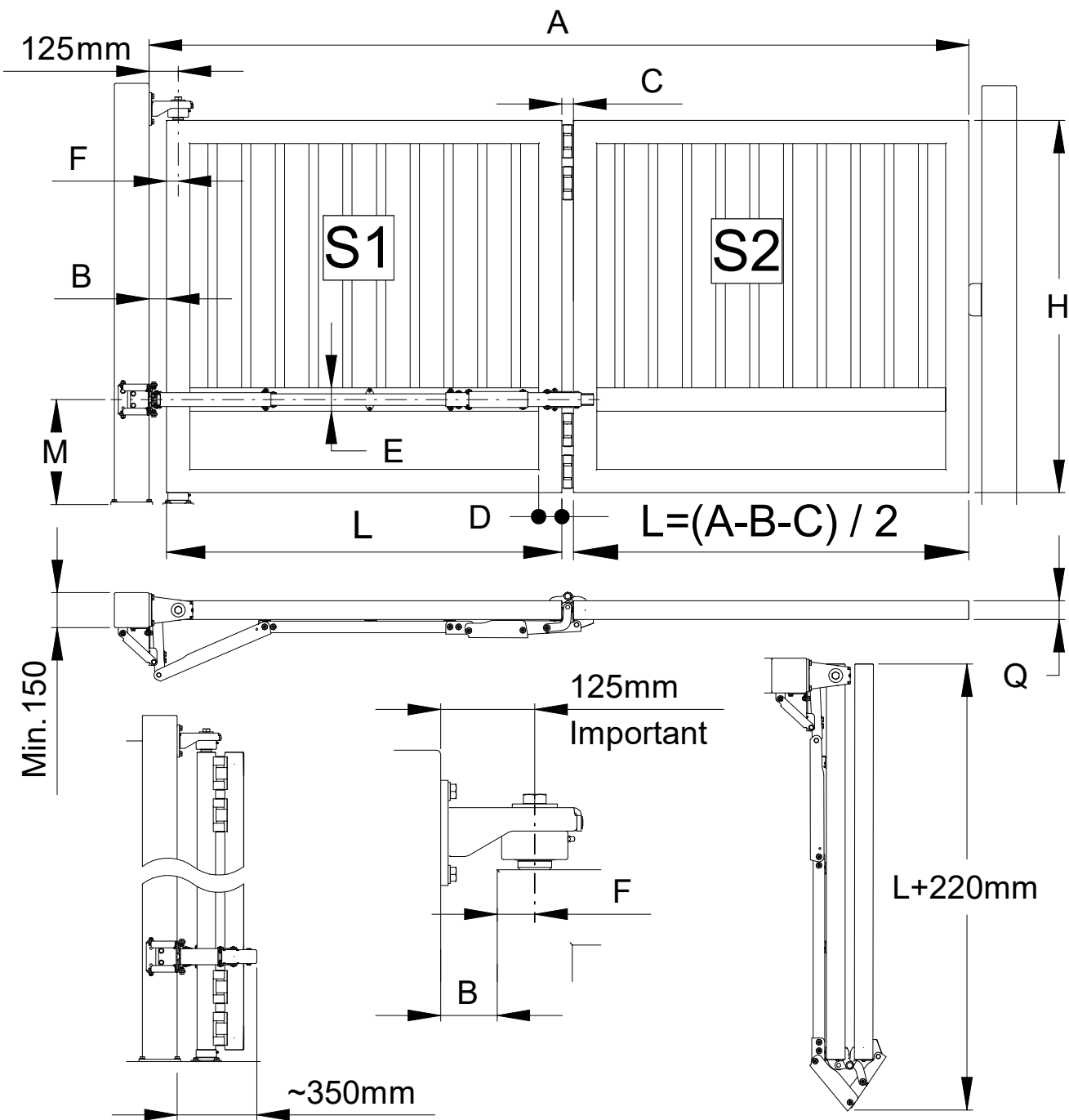


TABLA DE DIMENSIONES
SIZES CHART

A min-max (m)	B min (mm)	C (mm)	D min (mm)	E min (mm)	M	L min (m)	Q (mm)	A/H max
3 - 8	75	50	50	100	Cerca del motor Near the engine	1,44	50-60-80	3

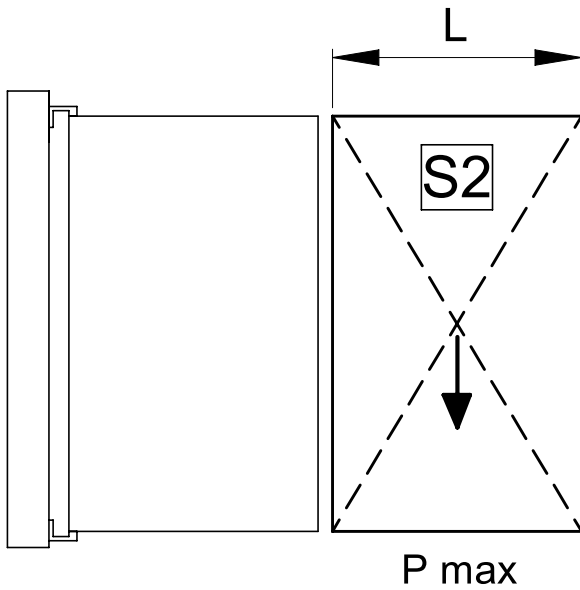
APERTURA A (m) OPENING A (m)	L (m) con/with B=0,07 m	Peso max S2 (kg)
3	~ 1,43	525
4	~ 1,93	380
5	~ 2,43	300
6	~ 2,93	250
7	~ 3,43	220
8	~ 3,93	180

EJEMPLO DE MEDIDAS FUERA DE LA TABLA
EXAMPLE OF OUT-OF-TABLE MEASUREMENTS

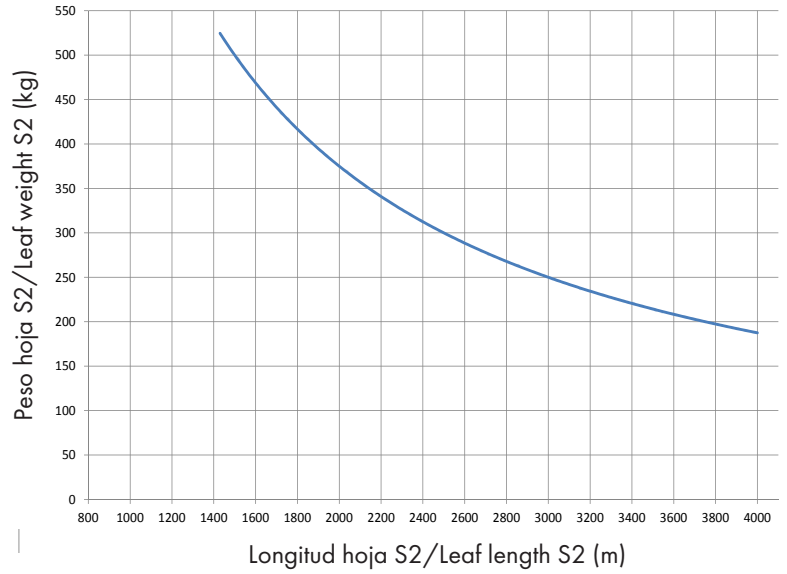
A = 5,6 m
 B = 85 mm
 C = 50 mm (como en la tabla superior / as per above table)
 L = (A-B-C)/2
 L = (5,6-0,085-0,05)/2
 L = 5,465/2
 L = 2,73 m



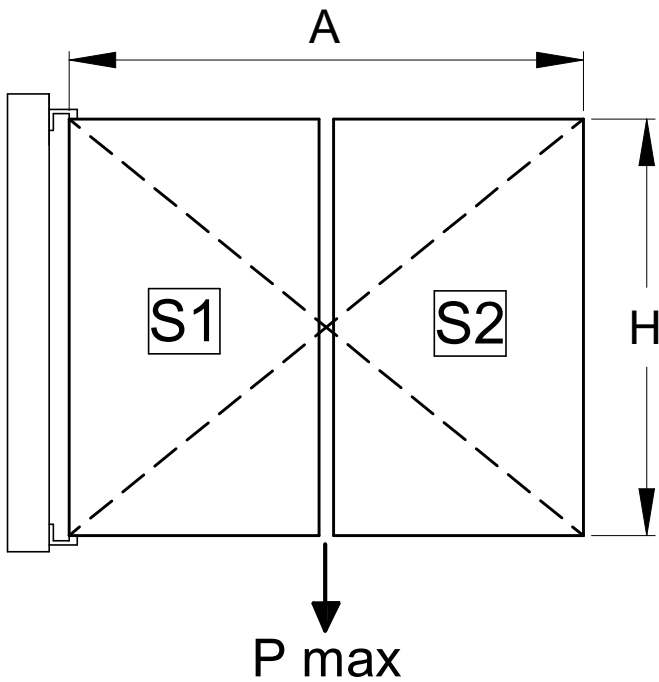
PESO MÁXIMO S2 EN RELACION CON L
MAX WEIGHT S2 IN RELATION TO L



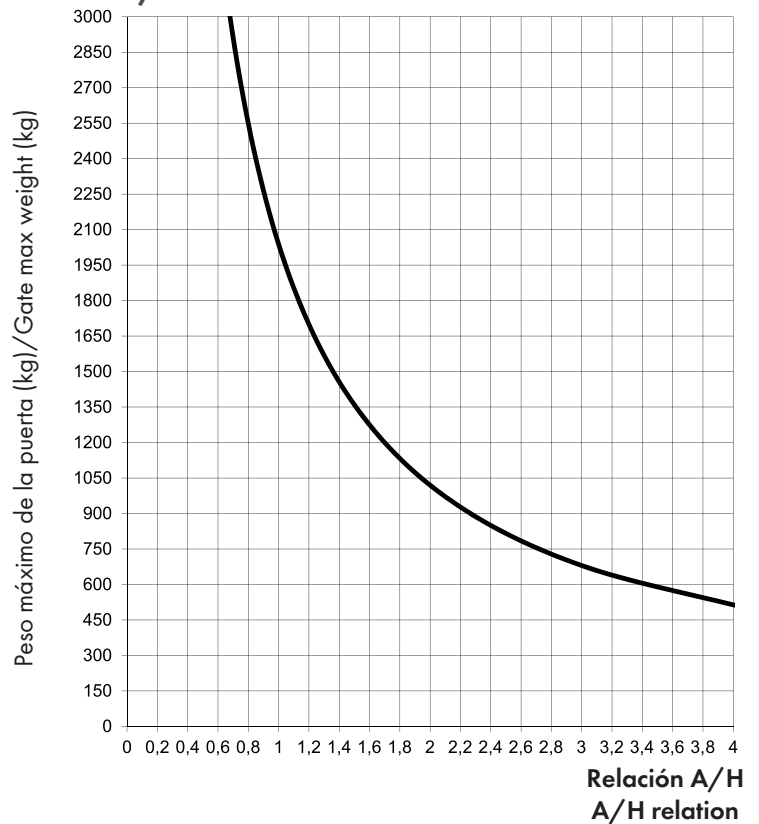
Peso de la hoja en relación con la longitud
Leaf weight in relation to the length



CAPACIDAD DE CARGA DE LOS PERNIOS EN RELACIÓN A A/H
HINGES WEIGHT CAPACITY IN RELATION TO A/H



A/H MAX = 3

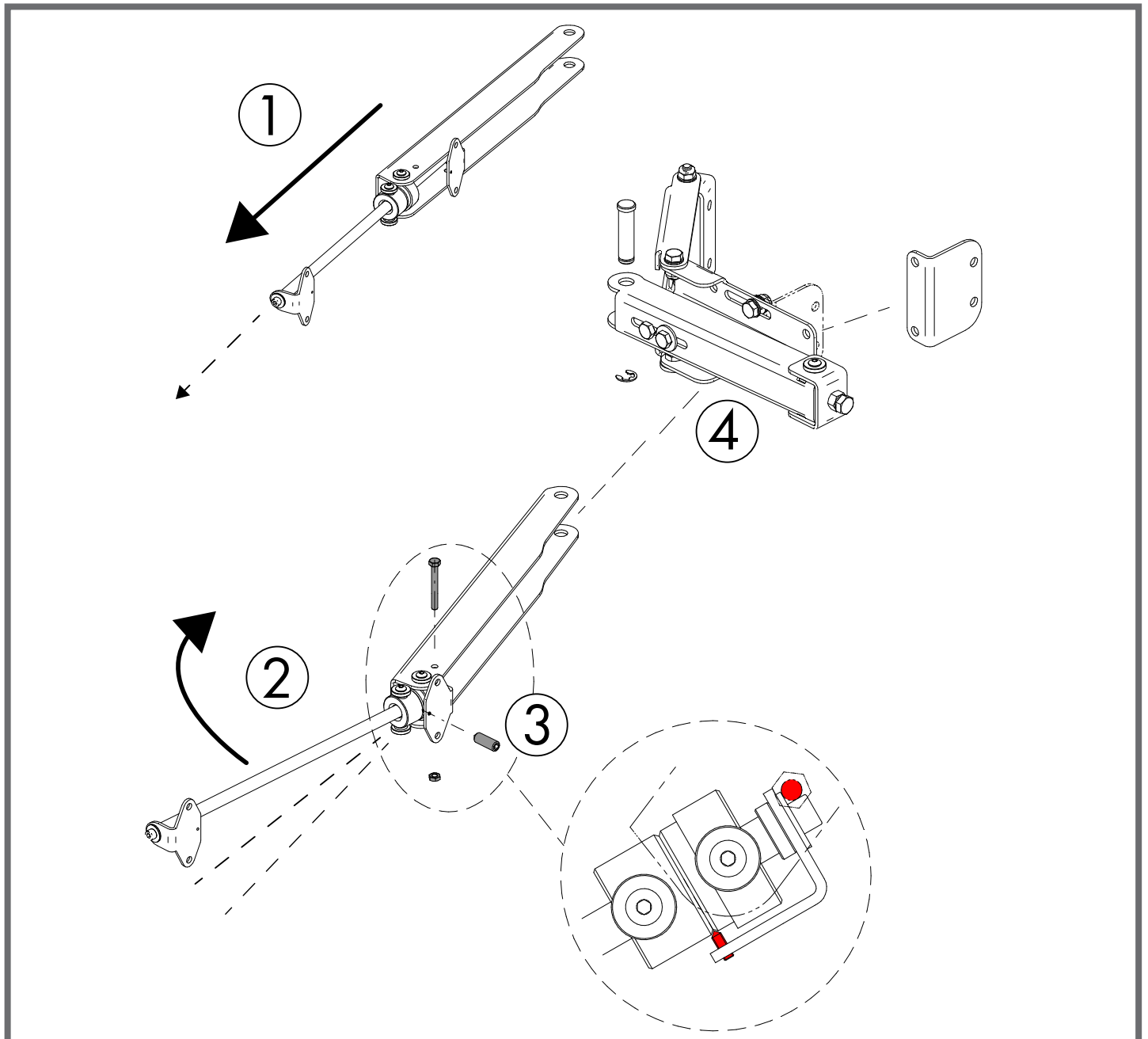


El punto de cruce entre el peso y la relación A/H debe estar por debajo de la curva del kit elegido.
The crossing point between weight and A/H relation must be under the curve of the chosen kit.



SIGUA LOS PASOS QUE SE MUESTRAN EN LA IMAGEN A CONTINUACION, PARA MONTAR CORRECTAMENTE LA JUNTA DE LA COLUMNA .

FOLLOW THE STEPS ILLUSTRATED IN THE IMAGE BELOW TO CORRECTLY ASSEMBLE THE COLUMN JOINT.

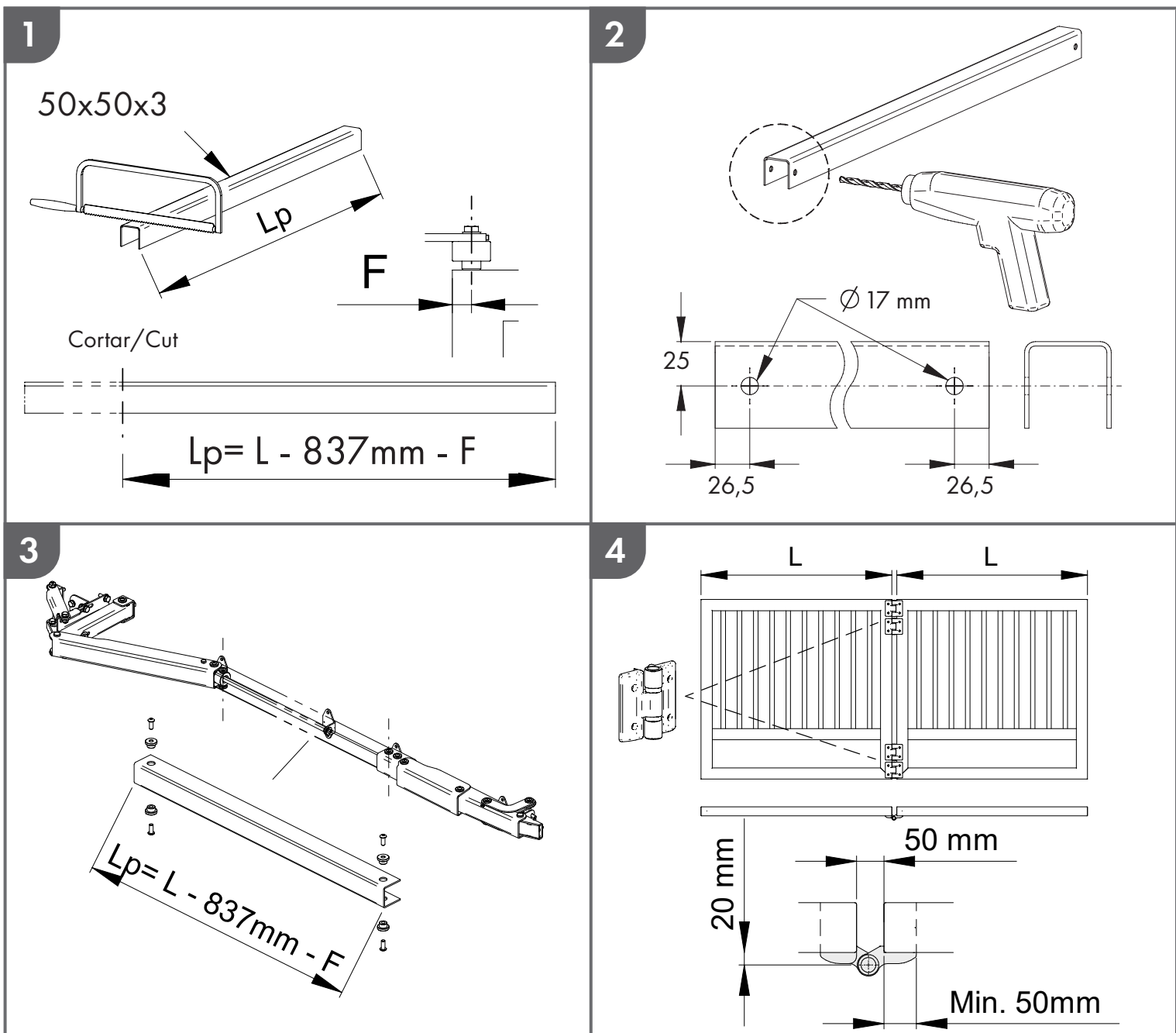




INFORMACIÓN TÉCNICA
TECHNICAL INFO

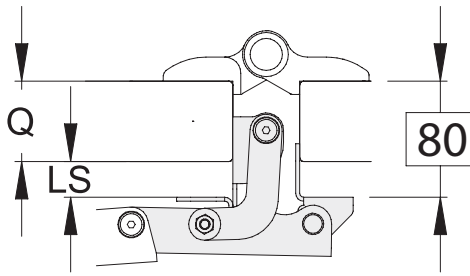
1. Para puertas motorizadas disponga puntos de salida lentos, paradas suaves y una velocidad adecuada para evitar efectos elásticos entre las hojas. Las aceleraciones, deceleraciones y variaciones de alta velocidad pueden reducir la duración del sistema y causar funcionamientos defectuosos y roturas.

1. For motorized gates provide slow starting points, soft stops and suitable speed in order to avoid elastic effects between the leaves. Accelerations, decelerations and high-speed variations can shorten the system duration and can cause malfunctions and disruptions.

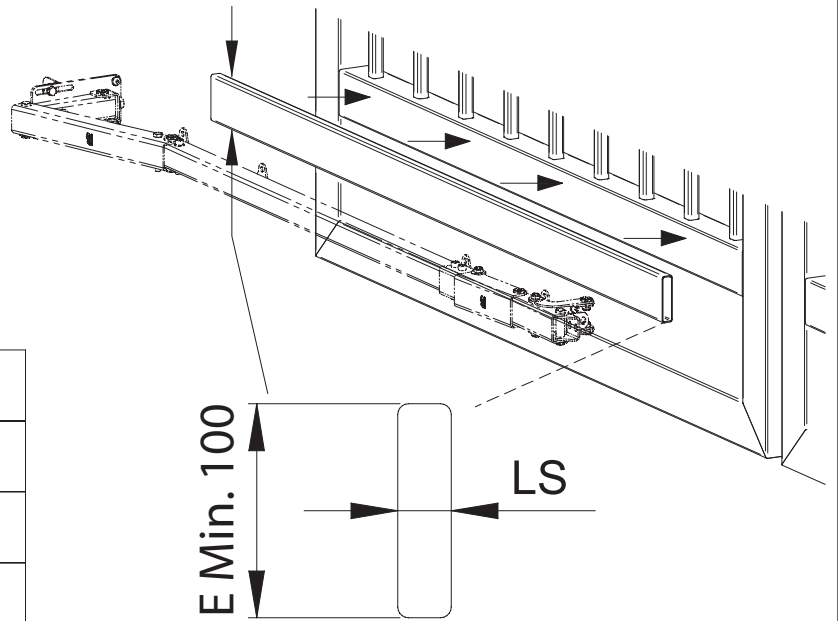




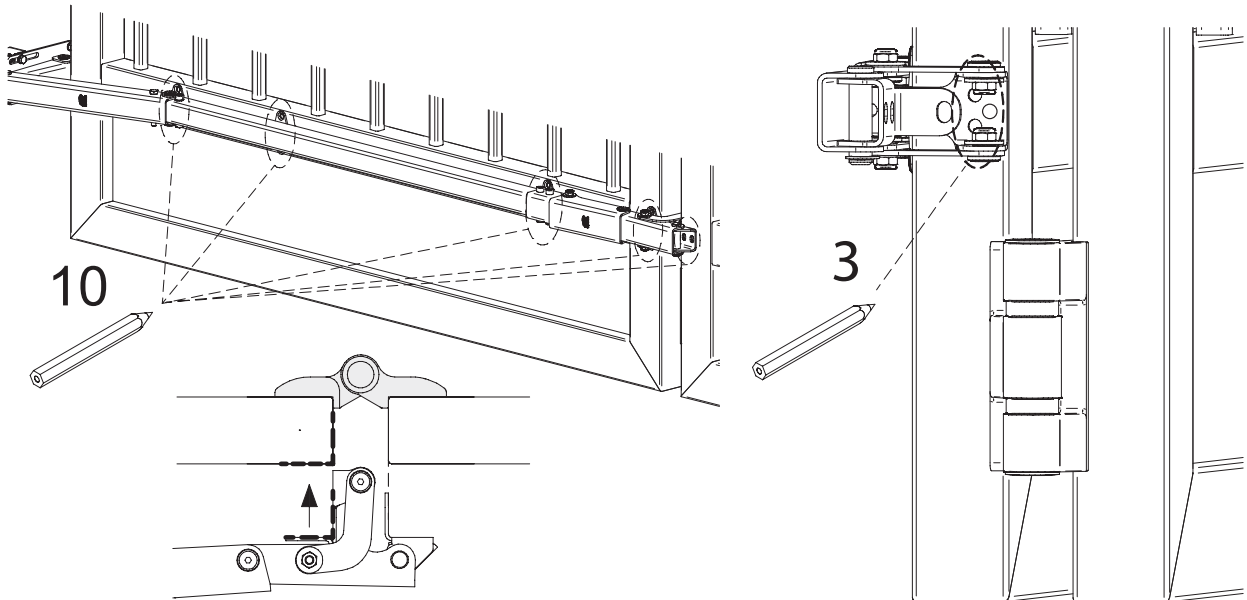
5



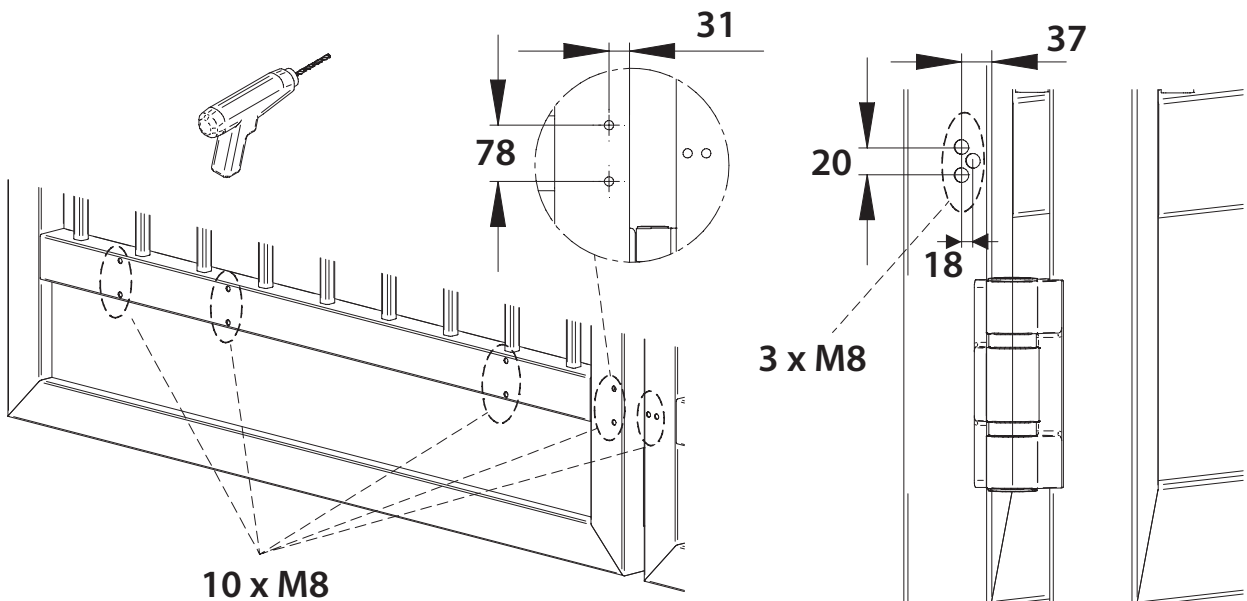
Q (mm)	LS (mm)
50	30
60	20
80	/



6

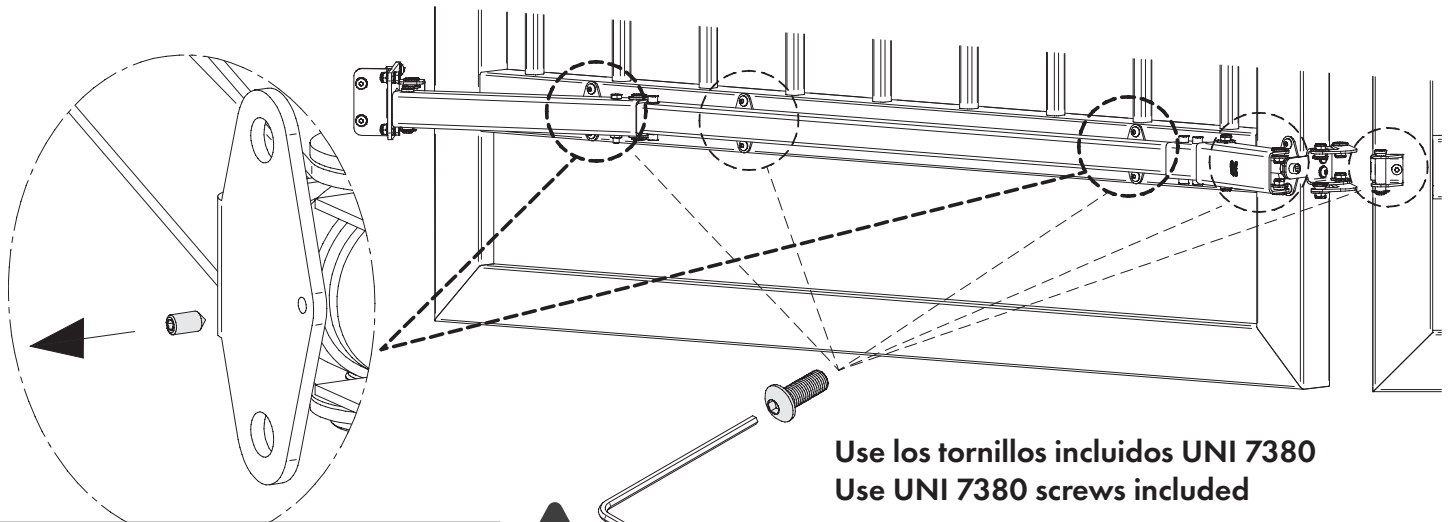


7





8



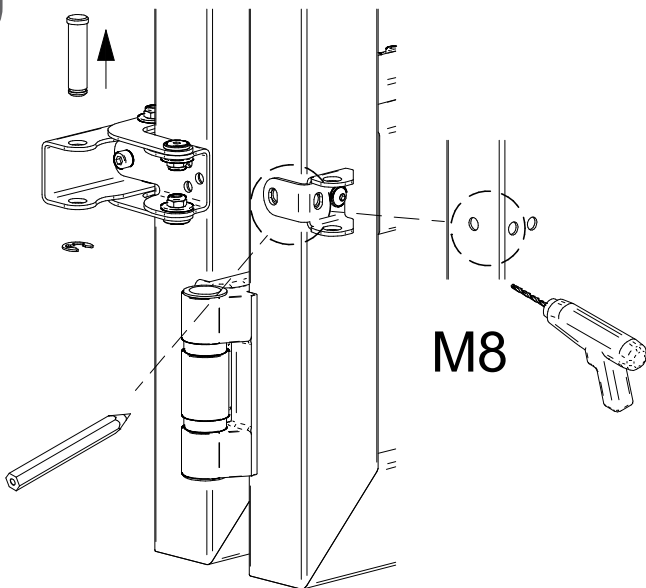
Use los tornillos incluidos UNI 7380
Use UNI 7380 screws included

Retirar despues de atornillar
Remove before fixing



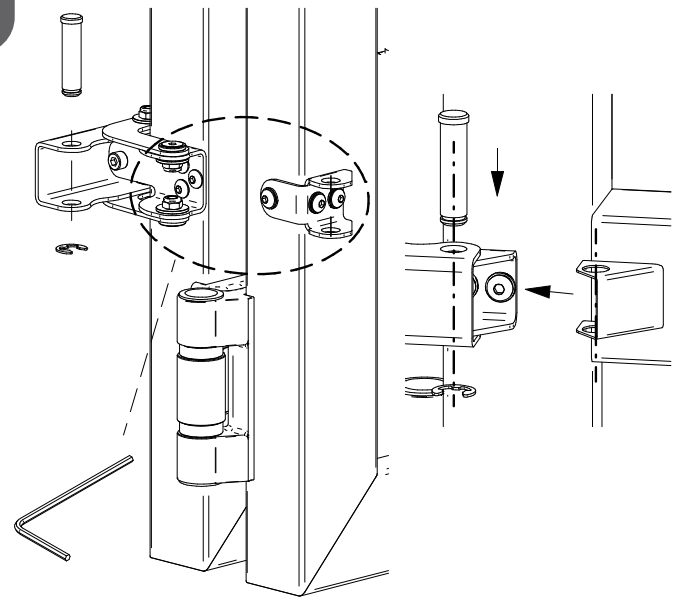
Atornille los tonillos frontales exclusivamente
Fix front screws only

9

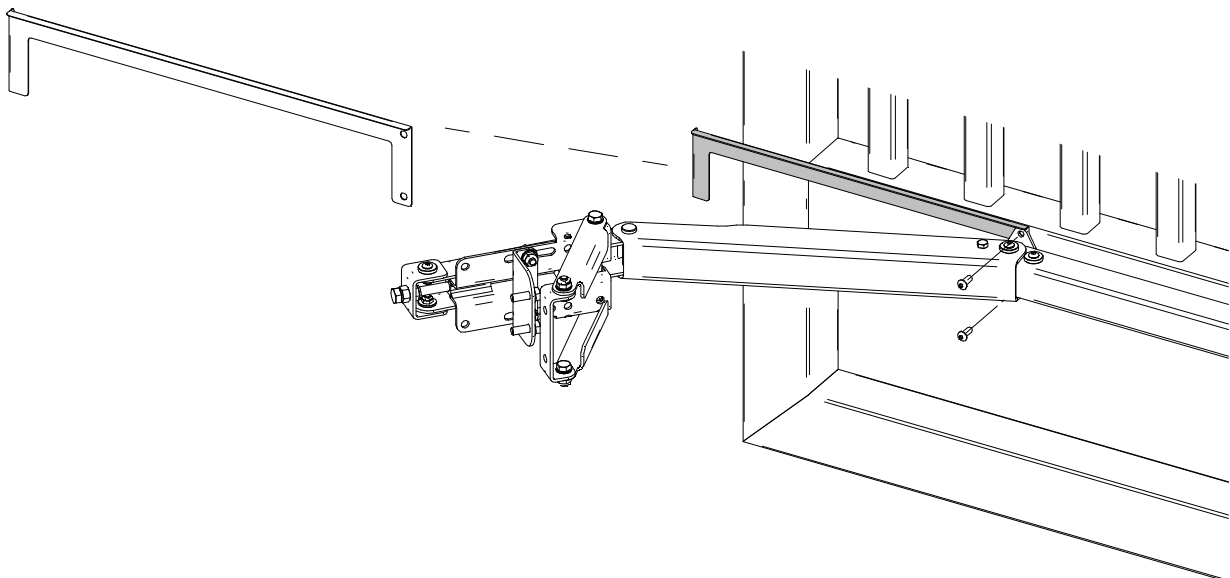


M8

10



11

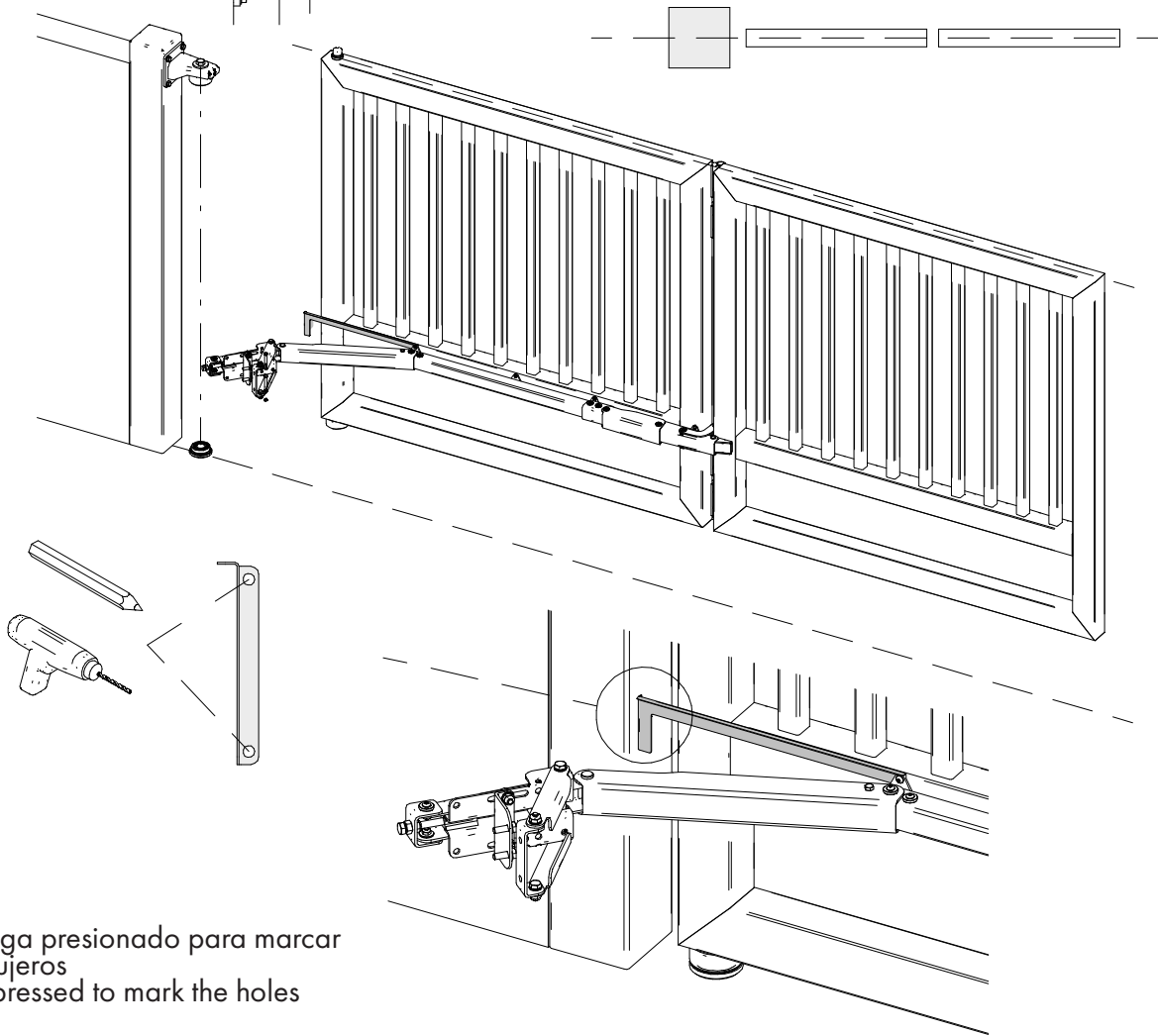




12

125

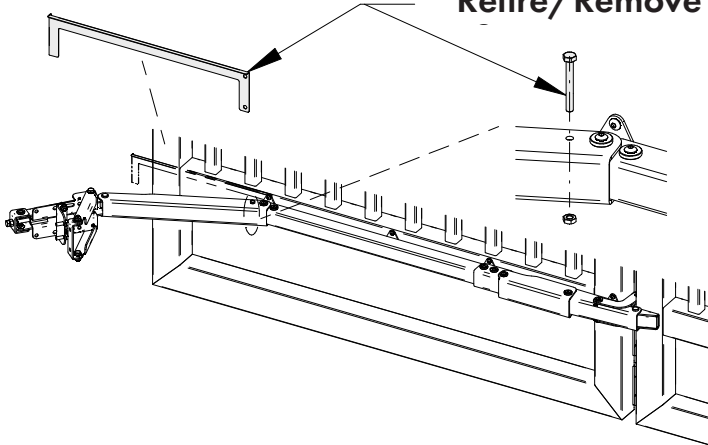
Marque los agujeros con la puerta en posición cerrada
Mark the holes with the gate in closed position



Mantenga presionado para marcar los agujeros
Keep pressed to mark the holes

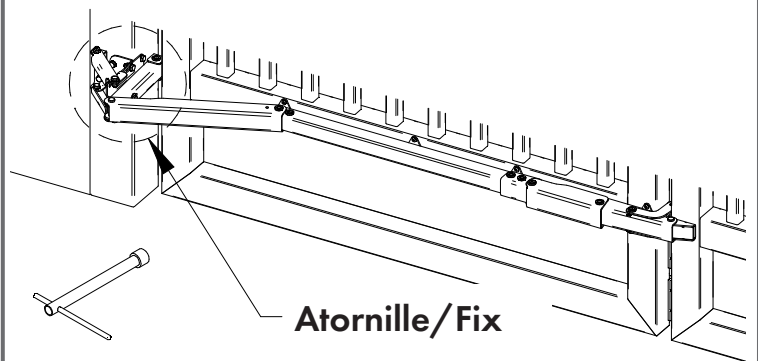
13

Retire/Remove



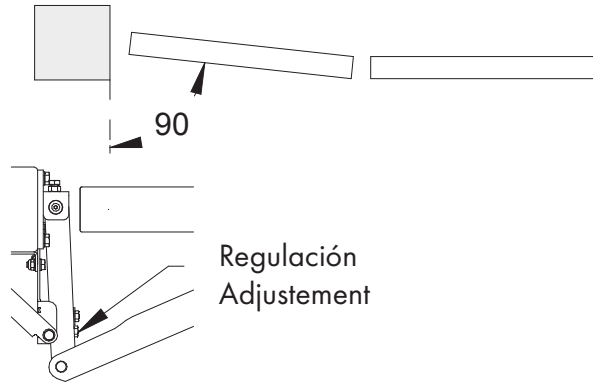
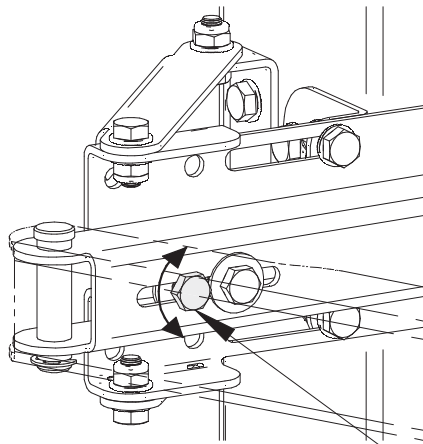
14

Atornille/Fix

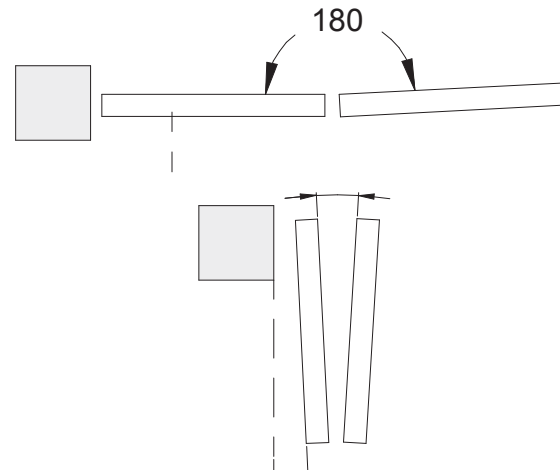
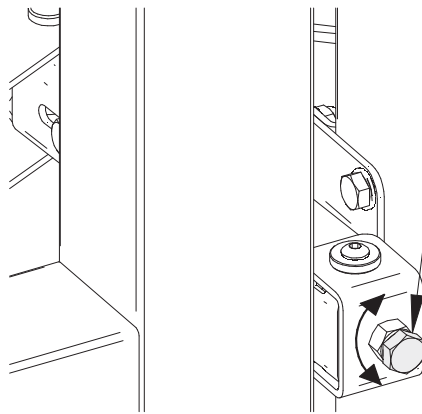




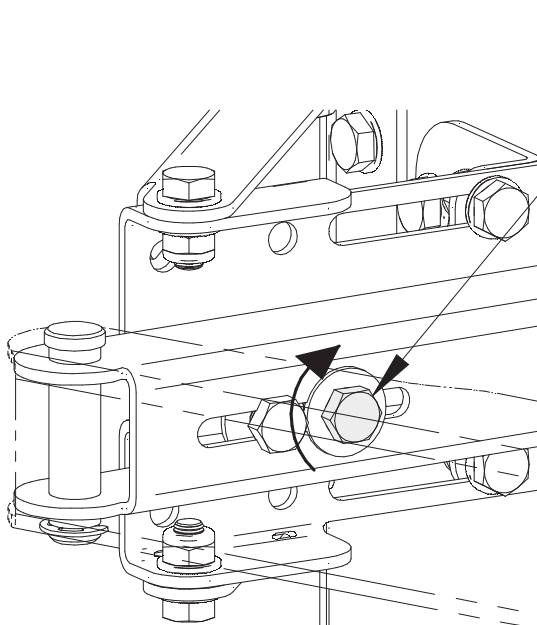
15



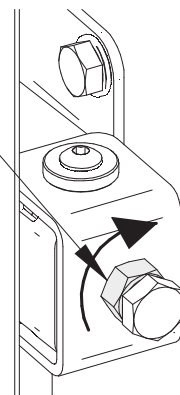
Regulación
Adjustement



16

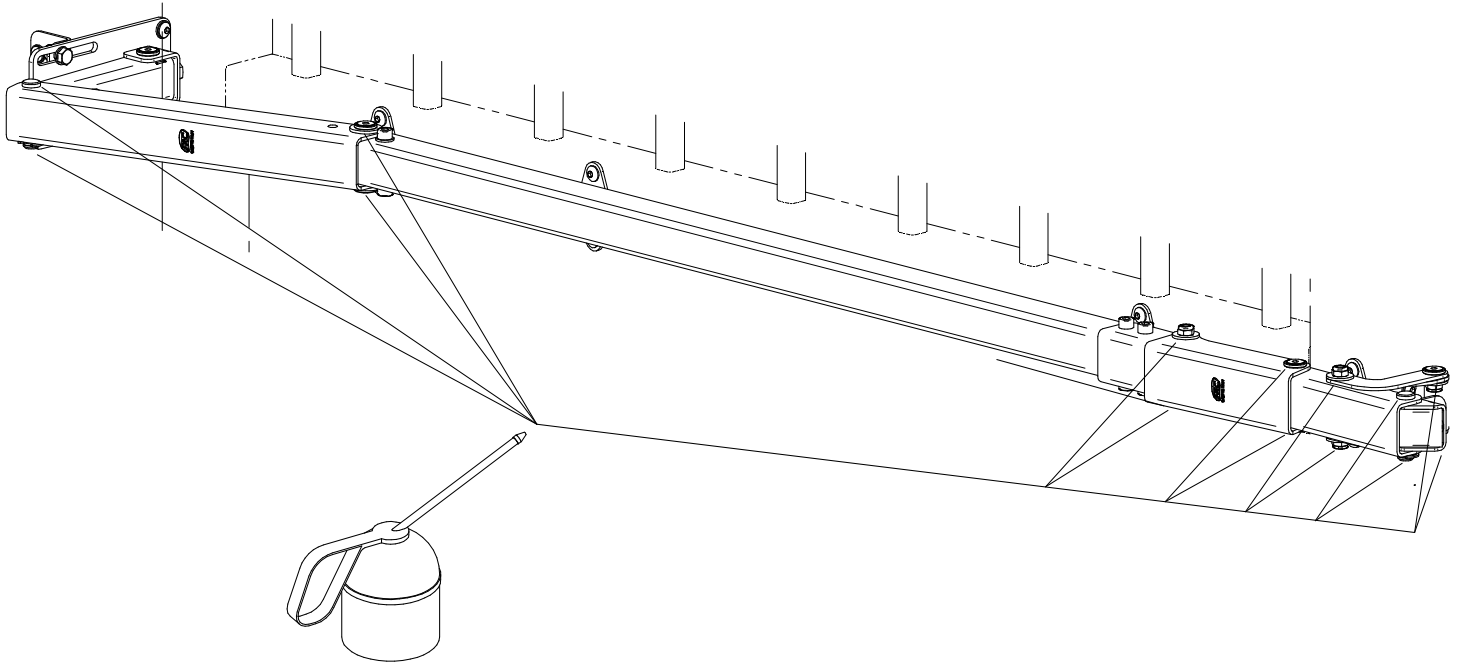


Retire
Fixing

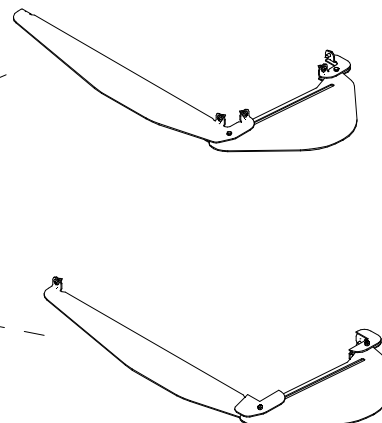
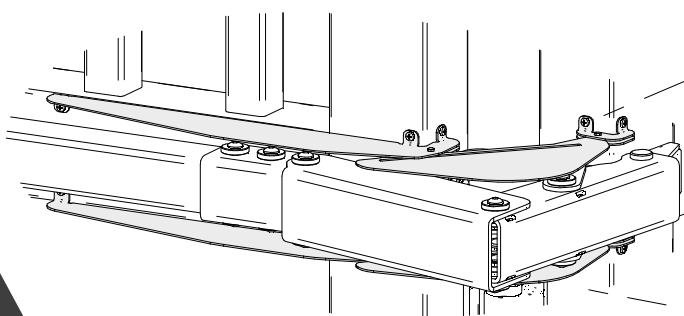
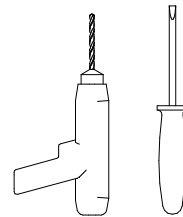
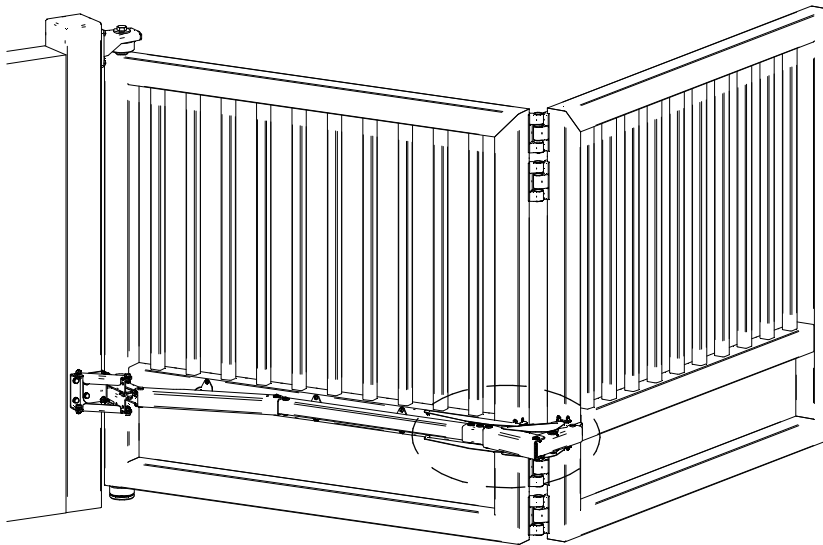




17



18



CARTER DE SEGURIDAD
SAFETY CARTER



MANTENIMIENTO MAINTENANCE

1. Eseguire le verifiche di funzionamento manuale a fine installazione; controllare periodicamente che il sistema sia correttamente funzionante, privo di allentamenti e ben lubrificato (consigliato ogni tre mesi o max 20.000 cicli). Se necessario intervenire serrando le viti e lubrificando.
2. In caso di malfunzionamenti dovuti ad usura o urti accidentali, assicurarsi che tutti i componenti atti al sostegno del cancello ed alla sua movimentazione siano integri, eventualmente procedere alla sostituzione.
3. FAC garantisce il corretto funzionamento del sistema esclusivamente con l'utilizzo di ricambi originali.

Attenzione: Gli accessori compresi nei kit e l'installazione proposta fanno riferimento ad un esempio standard. Una installazione non conforme alla procedura illustrata e/o l'omissione delle corrette manutenzione potrebbero causare malfunzionamenti, compromettendo la sicurezza di persone e cose adiacenti. Verificare che gli accessori siano idonei all'opera specifica e dotarla dei necessari dispositivi di sicurezza previsti dalle normative vigenti.

Per ulteriori informazioni scrivici a : info@fac srl.com

1. Perform all functioning inspections manually at the end of the installation; periodically check that the system is functioning, that it is well lubricated and does not have any loosening (we suggest a full examination every 3 months or maximum 20.000 cycles).
2. In case of malfunctions due to wear or accidental impacts, make sure that all components apt to support the gate and its movement are intact. If necessary, proceed with substitution.
3. FAC ensures the system correct functioning only using original spare parts.

Attention: The kit included accessories and the proposed installation make reference to a standard example. An installation not in accordance with the illustrated procedure and the omission of the correct maintenance might compromise nearby things and people's security. Make sure that all accessories suit the specific work and make sure to use the necessary safety devices provided by current regulations.

For more information: info@fac srl.com